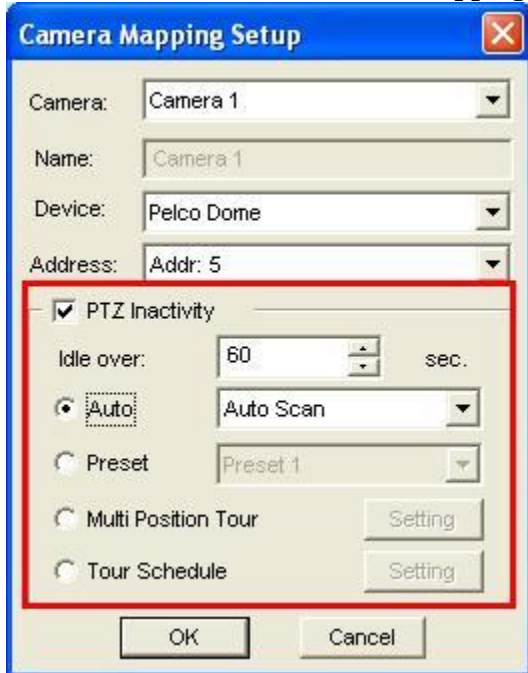


## 2.2.4 PTZ Idle Protection

1. In Multicam, click on the “**Configure**” icon.
2. Select “**Accessories**” -> “**Camera Mapping PTZ Dome**”.



3. Select the Camera to apply idle protection.
  4. Check “**PTZ Inactivity**”.
  5. Select the time period before idle protection activates.
  6. Select the desired function when idle protection starts by checking “**Auto**”, “**Preset**”, “**Multi Position Tour**”, or “**Tour Schedule**”.
    - a. “**Auto**” allows the PTZ camera to Auto Scan, Frame Scan, or Random Scan.
    - b. “**Preset**” will move the PTZ camera to a preset position.
    - c. “**Multi Position Tour**” allows the PTZ camera to dwell over a series of presets with the ability to set dwell time for each location.
    - d. “**Tour Schedule**” allows the PTZ camera to perform functions from a, b, and c by an hourly schedule.
  7. Click “**OK**”.
  8. Click “**OK**” again to finish setup.
- ✓ For detailed instruction, refer to p.58 of v8.3 User Manual