

Missing Object Detection Setup

Document ID: I05B0509

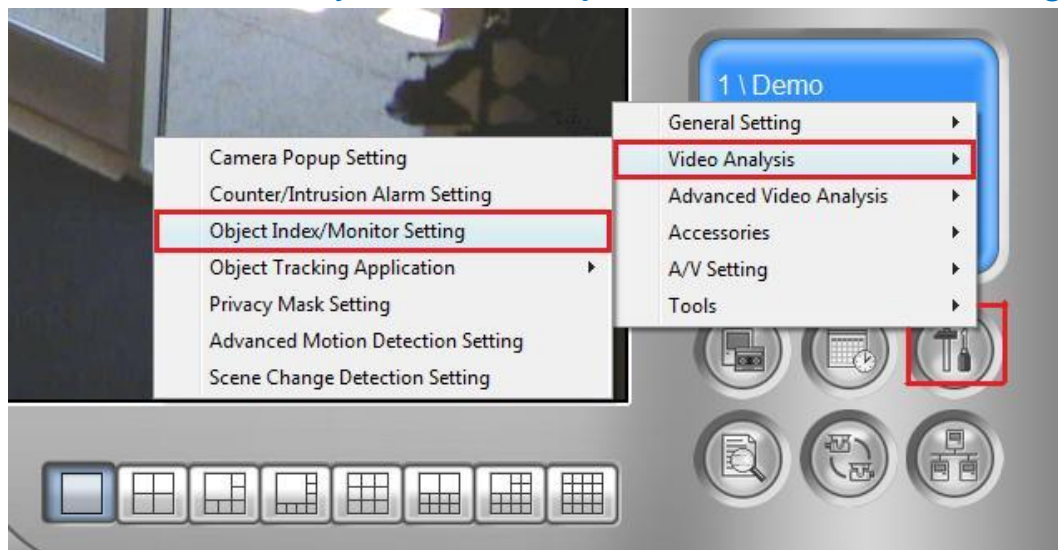
Objectives:

Video Analytics: Missing Object Detection Setup

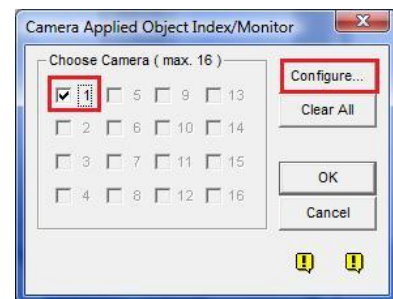
Applicable Multicam version: v8.0 and above

Video Analytics: Missing Object Detection Setup

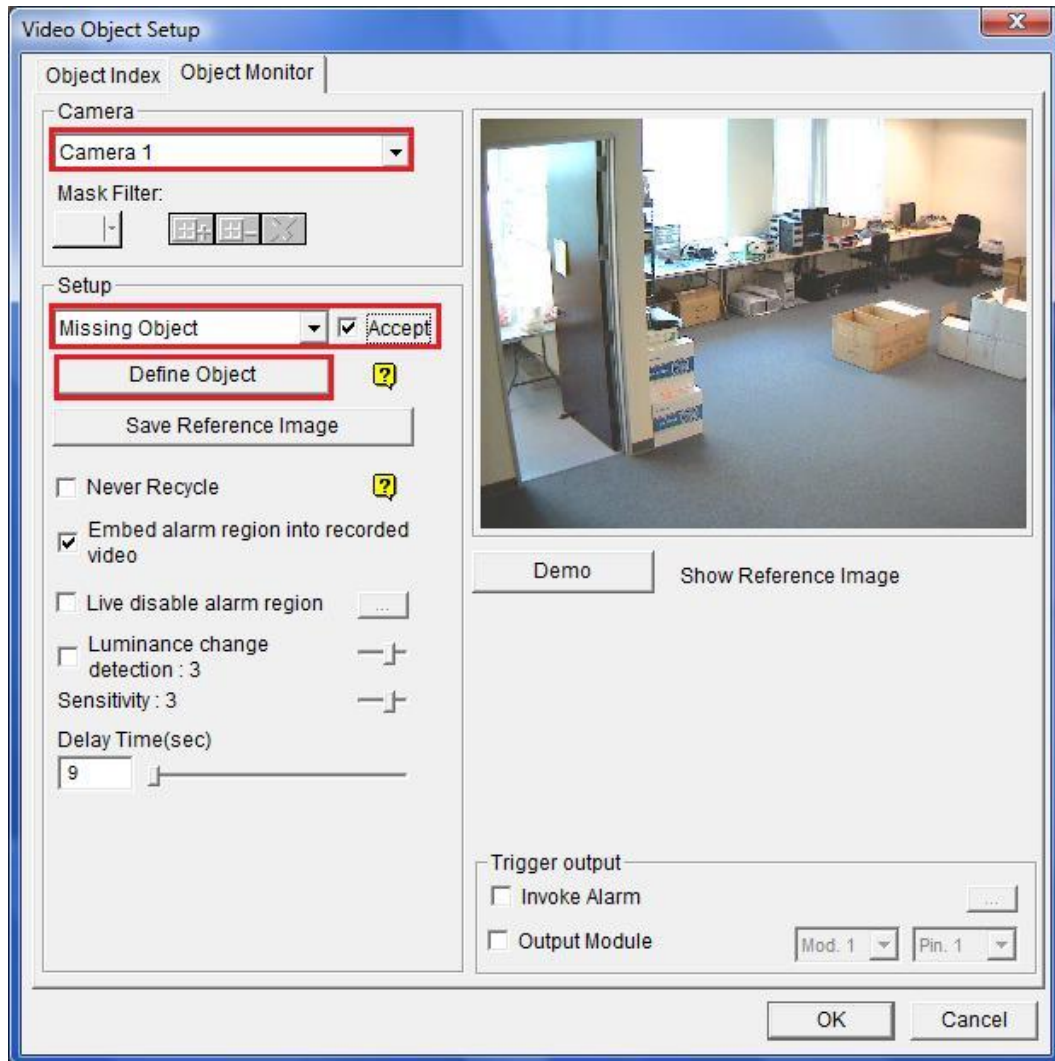
1. In GeoVision Multicam software, click on **Configure** button, select **Video Analysis**, then **Object Index/Monitor Setting**



2. Select the camera(s) which Missing Object Detection is to be applied, then select **Configure**

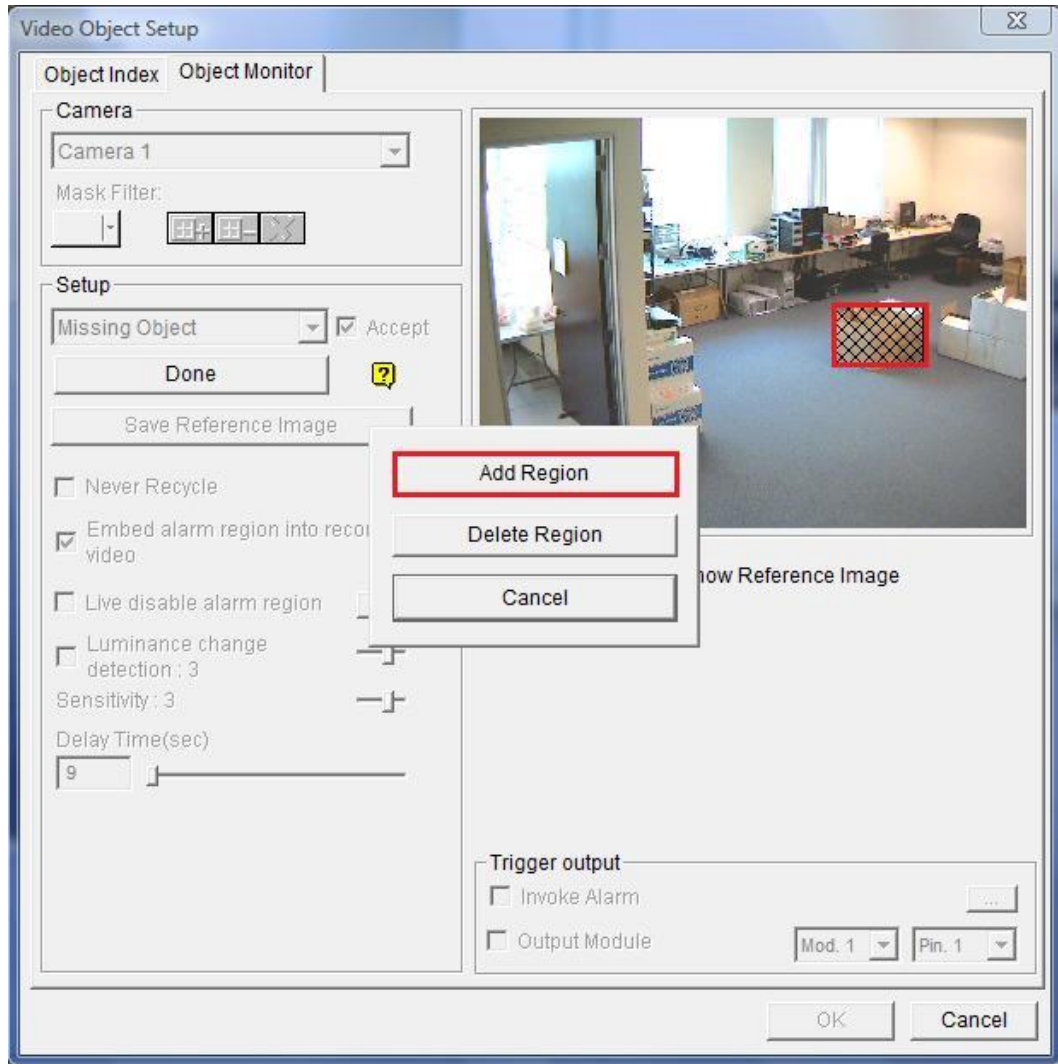


3. Under Object Monitor tab, select the camera number in the drop-down list to initiate setup. Then, select **Missing Object** in the drop-down list and place a check by Camera to activate this feature.



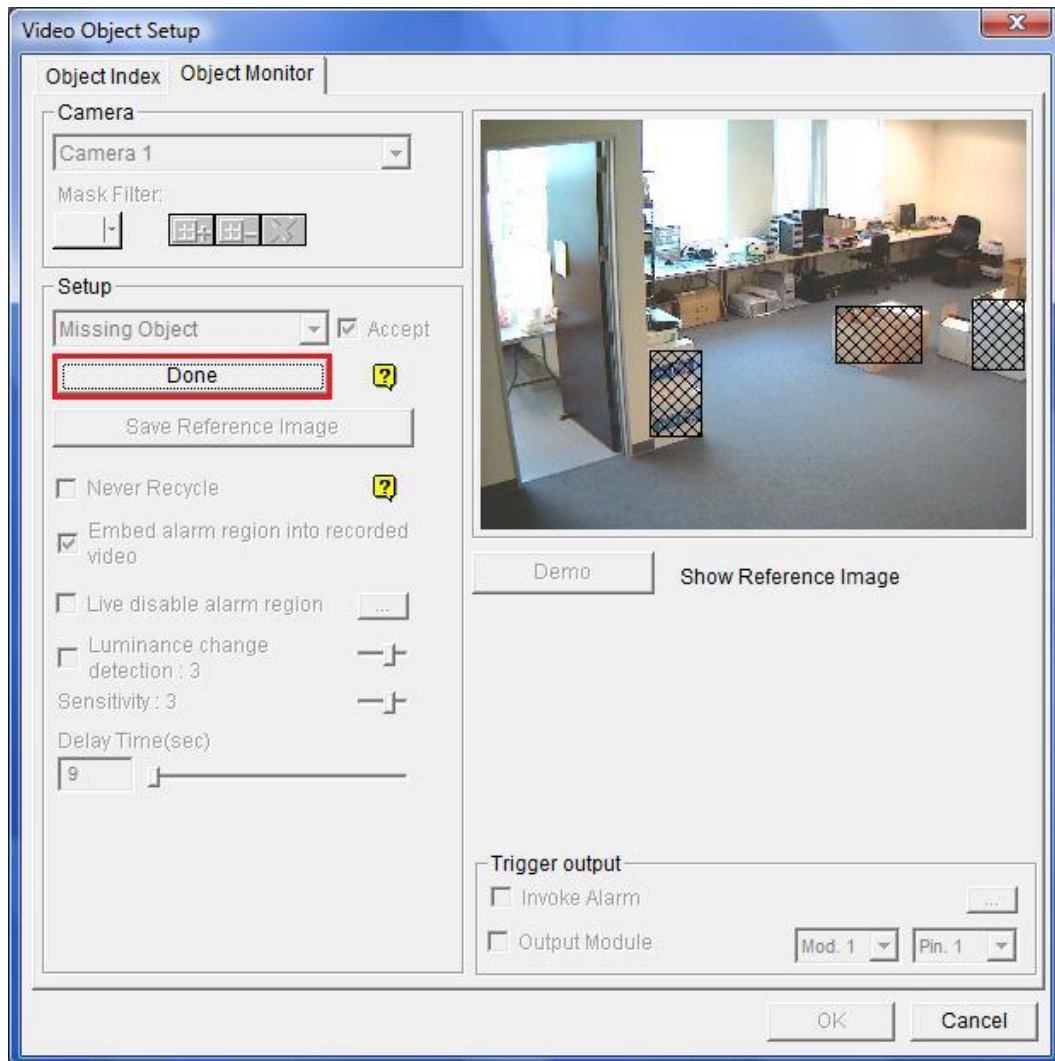
4. Click on **Define Object** to proceed

5. Draw a box covering the object(s) which you wish to monitor in the image preview on the right. The box should fit the size of the object. Then, select [Add Region](#)



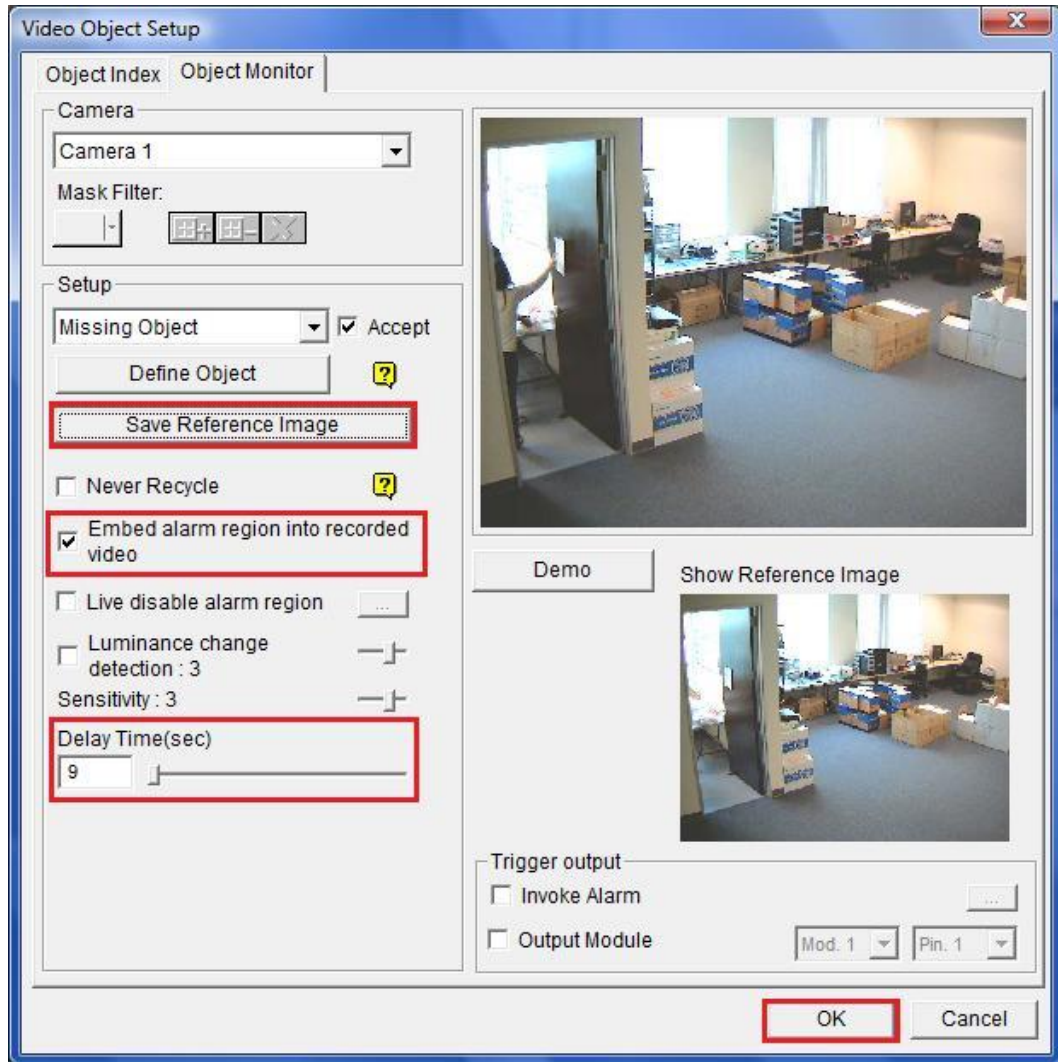
- ✓ If the drawn box is larger than the actual object, any change in the object surroundings may lead to false alarm
- ✓ If the drawn box is smaller than the actual object, it may lead to inaccurate missing object result

- Repeat step 5 to monitor multiple objects from the same camera. Then, select **Done** when finished



- ✓ Missing object will be detected if one or more objects as defined above has disappeared or moved away from its original position

7. After defining the object, click on **Save Reference Image**. Then, adjust Delay Time(sec) to define the grace period before an object will be recognized as missing



8. Finally, click **OK** to finish setup

- ✓ If the object is returned before the grace period expires, it will not be recognized as missing
- ✓ You may wish to select “Embed alarm region into recorded video” if you would like the triggered object region to appear in recorded video